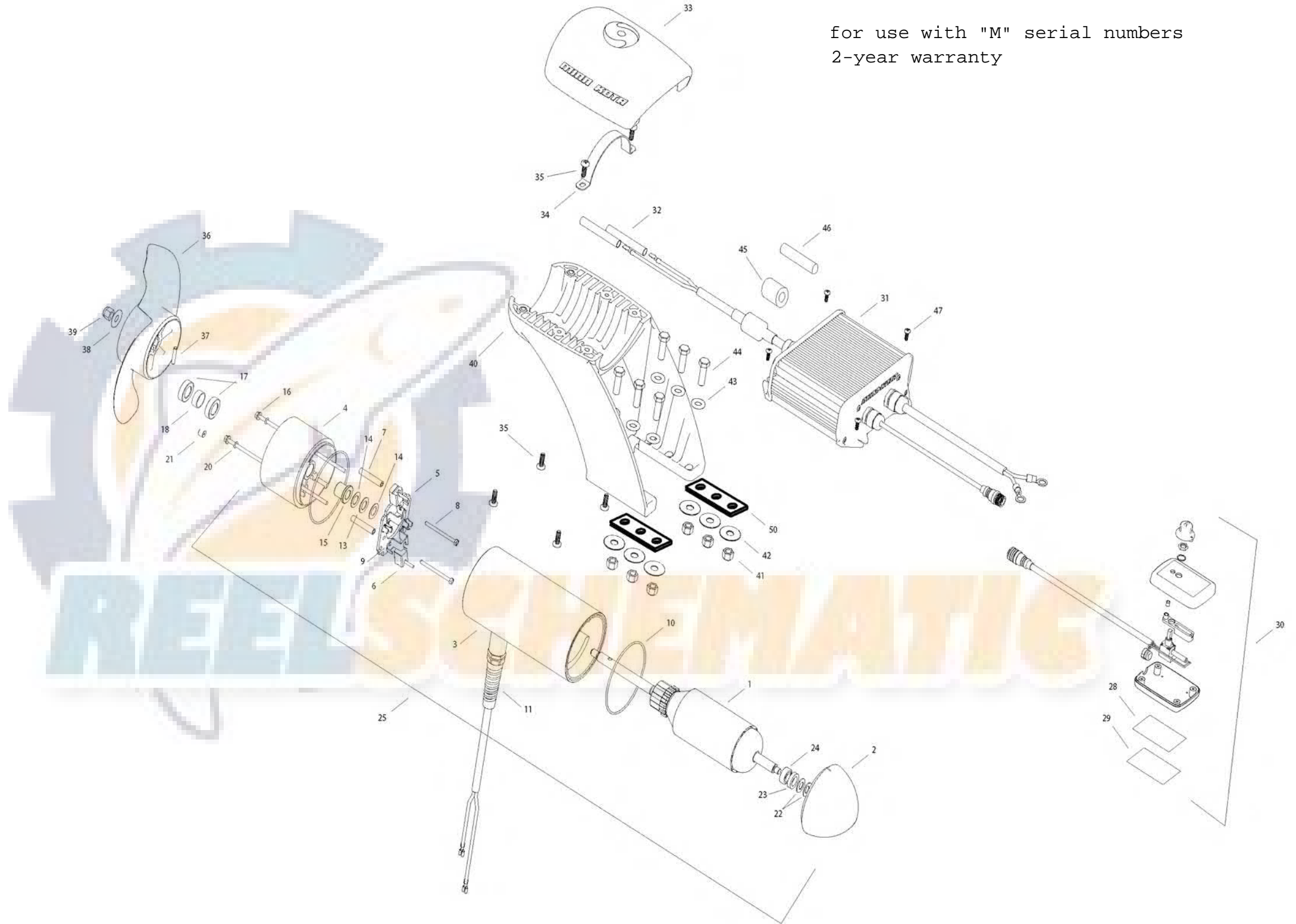


EM 80
24 VOLT 58 AMPS

for use with "M" serial numbers
2-year warranty



1 2-100-234 ARMATURE 24V 4.0
 2 421-276 PLAIN END
 3 2-200-161 CENTER HOUSING ASSEMBLY
 4 2-300-149 BRUSH END HOUSING (CONTAINS 4-9)
 5 2-600-234 BRUSH PLATE ASSEMBLY (CONTAINS 5, 6, 9)
 6 188-094 BRUSH
 7 973-025 SPACER - BRUSH PLATE
 8 830-027 SCREW #10-32 X 2 SLF THREAD
 9 975-041 BRUSH SPRING
 10 701-043 O-RING [2 EA]
 11 2772917 LEADWIRE ASSEMBLY

13 990-051 WASHER STEEL
 14 990-052 WASHER NYLATRON
 15 144-017 FLANGE BEARING
 16 830-094 THRU-BOLT 12-24 X 10.31
 17 880-025 SEAL [2 EA]
 18 725-095 PAPER TUBE

2889460 SEAL & ORING KIT

20 701-009 O-RING THRU-BOLT
 21 836-001 ALUMINUM PLUG
 22 992-010 SPRING WASHER [2 EA]
 23 990-045 THRUST SPACER
 24 140-010 BALL BEARING
 25 2396233 MOTOR ASSY 24V 4.0 80#
 28 9950953 VELCRO 1.5 X 2.0 LOOP
 29 9950950 VELCRO 1.5 X 2.0 HOOK
 30 2990241 HAND CONTROLER
 31 2990247 CONTROL MODULE
 32 2385401 SHRINK TUBE [2 EA]
 33 2380210 TOP CAP
 34 2383810 STRAP, EM
 35 2383418 SCREW 1/4-20 SELF TAPPING [6 EA]
 ■ 1378132 PROP KIT
 36 2331160 PROPELLER
 37 2092658 DRIVE PIN
 38 2091701 WASHER, PROP LARGE
 39 2093101 NUT, PROP
 40 2381940 LOWER BRACKET
 41 2383122 NUT 3/8-16 NYLOCK [6EA]
 42 2381726 WASHER FENDER 3/8 X 1 1/4 OD [3 EA]
 43 2381728 WASHER 3/8 [3 EA]
 44 2383422 SCREW 3/8 X 1 1/4 [6EA]
 45 2307310 FERRITE BEAD (EUROPEAN MOTORS ONLY)
 46 2075401 HEATSHRINK (EUROPEAN MOTORS ONLY)
 47 2373427 SCREW #12 X 5/8 [4 EA]
 50 2385110 INSULATOR PAD, EM
 ■ 2994856 BAG ASSY (CONTAINS 38-41,32,28,29,47, 50, & TIE WRAPS)



* This item is part of an assembly. This item cannot be sold separately due to machining and /or assembly that is required.

